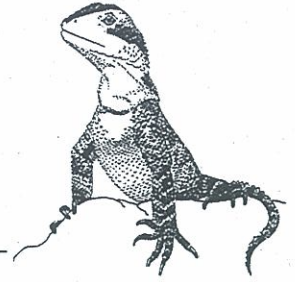


Newsletter No 165
May 2015

WEPA



Willoughby Environmental Protection Association

Next Meeting: Tuesday 19 May 2015

Glenaeon School Hall, 121 Edinburgh Road, Castlecrag
(between Charles and Edith Streets and opposite The Parapet)

8 pm

CHASING ICE
a film by Jeff Orlowski

In the spring of 2005, acclaimed environmental photographer James Balog headed to the Arctic on a tricky assignment for National Geographic to capture images to help tell the story of the Earth's changing climate.

CHASING ICE is the story of one man's mission to change the tide of history by gathering undeniable evidence of our changing planet. Within months of that first trip to Iceland, the photographer conceived the boldest expedition of his life, The Extreme Ice Survey. With a band of young adventurers in tow, Balog began revolutionary time-lapse cameras across the brutal Arctic to capture a multi-year record of the world's changing glaciers.

As the debate polarises America and the intensity of natural disasters ramps up globally, Balog finds himself at the end of his tether. Battling untested technology in subzero conditions, he comes face to face with his own mortality. His hauntingly beautiful videos compress years into seconds and capture ancient mountains of ice in motion as they disappear at a breathtaking rate. CHASING ICE depicts a photographer trying to deliver evidence and hope to our carbon-powered planet

Everyone is welcome. Please join us for supper after the film.

Sunday 7 June 2015 WEPA Native Plant Stall at the Castlecrag Fair 10am - 3pm Details page 2

CONTENTS:

STOP the CHOP , p3-4; Noisy miners - ultimate aggressors, p5; Coal mine threats to Sydney's drinking water, p6; Attack on your right to speak out, p7; Council amalgamations, p7; EDO deprived of funding, p8; Watermark Coal and koalas, p8; Landowner can refuse access to coal company, p9; Tide turning against coal, p9; Adani, p9; New Planning Minister, p10; New natural resource legislation, p10; Greater Sydney Commission, p10; Australia falls behind in global renewable energy, p11; 2015 Budget, what it means for climate, clean energy institutions, p12.;

Willoughby Environmental Protection Association (WEPA) Inc., PO Box 4263, Castlecrag,
NSW, 2068

A member of the Nature Conservation Council of NSW

DIARY DATES

Willoughby Heritage Festival 2015

1st April - 26 May

Some events have finished but the following may be of interest.

a) Willoughby: Celebrating 150 years in the making through the rare and precious. Wednesday 8 April to Tuesday 30 June Treasures and curios that reflect the City's history and heritage. These are precious items from Willoughby Library's local studies collection. Willoughby Library on The Concourse. Enquiries: 9777 7900. Free

b) Willoughby's Bushland Heritage Walk - Harold Reid Reserve, ANZACs and Poems 9.30am 12pm, Sunday 17 May

Don Swonnell will join the walk for morning tea at the lookout over Sugarloaf Bay and will read poems from the aspect of WW1 Diggers and their families. Please note, some sections of the walk are steep with steps. Bookings essential: 9777 7942 or contact

emmahayes@Willoughby.nsw.gov.au

c) 1883 Heritage Waterfront Cottages 8am - 3pm, Saturday 23 May
Foreshore cottages 217B and 227 Edinburgh Road, Castlecrag Free

A great opportunity to view these heritage-listed waterfront cottages including the Heritage-Awarded 1883 Sandstone Core cottage. Items of great public interest and controversy in former years, both dwellings have been restored by their occupants. Closest parking is on Edinburgh Road near Stoker Playground. Follow signs to the northern escarpment bush track which leads down 300 steep steps with no handrails. Boots or sandshoes/joggers required. Enquiries: 0417 217 937 or 0407 736 302

d) The Griffins' creative forces: Walter Burley Griffin and Marion Mahony Griffin at Castlecrag 10.30am - 1pm, Saturday 23 May

Adults \$20, Children \$10, Family \$50, Concession \$15, National Trust members and WBGS members \$15

The suburb of Castlecrag was designed by Walter Burley Griffin as a residential community inspired by the ecological and aesthetic qualities of the landscape of Middle Harbour and its foreshores.

This guided tour will take you through some of the reserves and walkways at Castlecrag, while you learn about the creative forces Walter and Marion Mahony Griffin brought to their work and the community that they fostered there.

Please bring hat, walking shoes and water.
Bookings essential: info@griffinsociety.org

Wednesday 20 May 12pm

Action against Commonwealth Bank

48 Martin Place, Sydney

350.org is organising a week of nationwide action, from 19 - 23 May to let the Commonwealth Bank know that the community won't let them get away with financing the coal mines in the Galilee Basin and the Abbot Point port expansion on the Great Barrier Reef.

Planning in the Public Interest by Philip Thalys

Wednesday 27 May 2015 8pm

Killara Uniting Church (corner Karranga and Arnold Street, Killara))

Philip Thalys gave an outstanding presentation - Planning for People - at BPN's pre-election forum. Don't miss this follow on.

Hosted by Friends of Ku-ring-gai Environment (FOKE)
Free. All welcome.

Sustainable Population Talk - North Sydney

Saturday 6 June 2015

For details see <http://northsideforum.org.au/>.

WEPA Native Plant Stall at Castlecrag Fair

Sunday 7 June 2015 10am - 3pm

Edinburgh Road and The Postern, Castlecrag

Autumn is an ideal time for planting. WEPA will once again be selling native plants, including local species.

Most will be tube stock, but we will also have some more advanced plants.

If you would like to order, we will try to obtain your requests. Contact Gay on 99958 8569 or

gay.spies@icloud.com or Sheila on 9958 5978

Please let us know ASAP. If you can share a couple of hours to help on the stall it would also be much appreciated. Again, please let us know so we can organise a convenient time.

WEPA Office Bearers and Committee 2015

President	Gay Spies
Vice President	Cotter Erickson
Secretary	(vacant)
Treasurer and Public Officer	Diana Jones
Publicity Officer	Christina Pender
Committee	Geoff Osborne, Harold Spies

The newsletter is produced by Gay Spies. Contributions are always welcome and should be received a fortnight before the speaker meeting. The next newsletter will go out in the week before the next speaker meeting on Tuesday 21 July